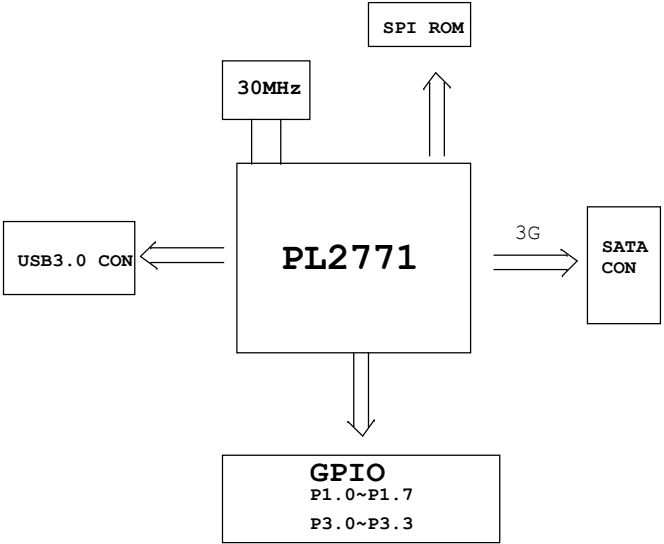
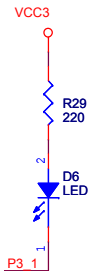
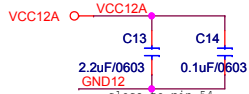
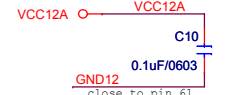
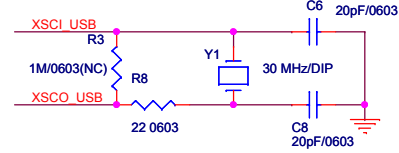


Version	Date	Description	Author
V0.92	2009/09/**	First Released	
V0.93		PL-2771 pin24 connect to VCC12A	
V0.94		PL-2771 pin47,pin48 no connection	
V0.95		Saving some components	
V0.96		PL-2771 LQFP64 add 4pcs GPIO pins	
V0.97		Correct pin name of Pin25, Pin27, Pin29, Pin31	
V0.98		Correct R13/R15 Vbus resistor from 10k/20k to 39k/62k	
V0.99		Change R1,C43 value and add R32,R33,R34,C45 for chip function	
V1.0		Change 1.2V regulator from linear to PWM	
V1.1		Add GPIO pins application	
V1.2		Correct C6/C8 capacitor value from 10p to 20p	



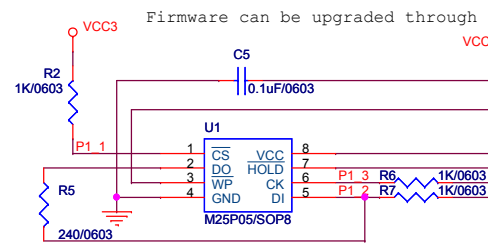
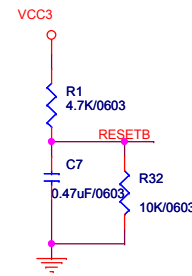
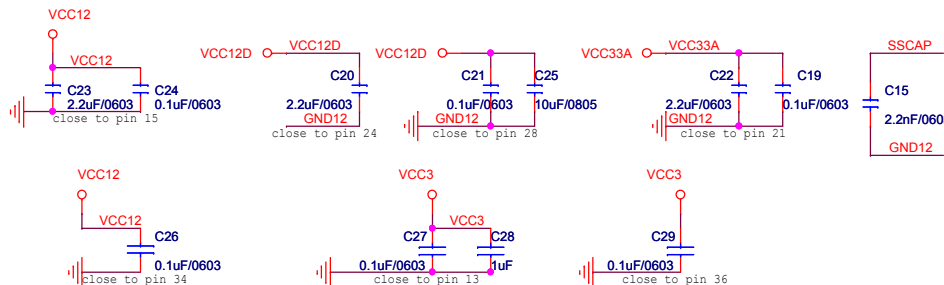
PROLIFIC			
Title		PL2771 LQFP64 Demo Board	
Size	Document Number	Version & Block Diagram	Rev
B			1.2
Date:	Tuesday, November 23, 2010	Sheet	1 of 3

C1,C2,C3,C4 shall be closed
SATA connector. Differential
traces(100 ohm +/- 15 ohm)
Single traces(50 ohm +/- 5
ohm)



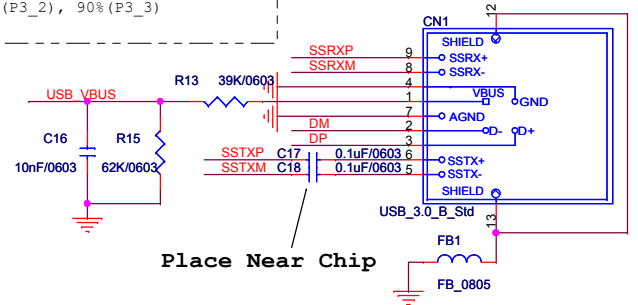
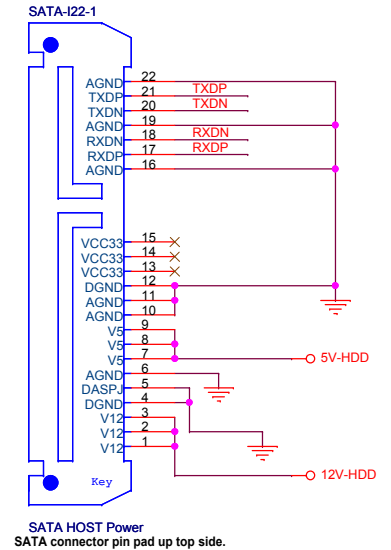
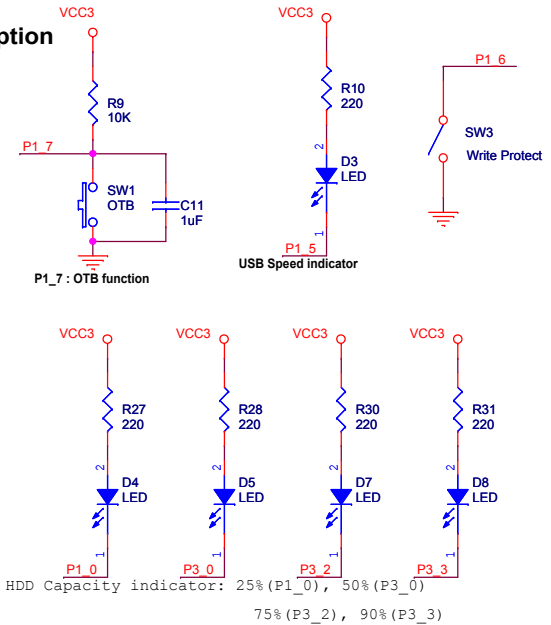
P3_1 : Data access function(LED light when idle model)

P3_0: Breathing LED: Please enable this function from tool



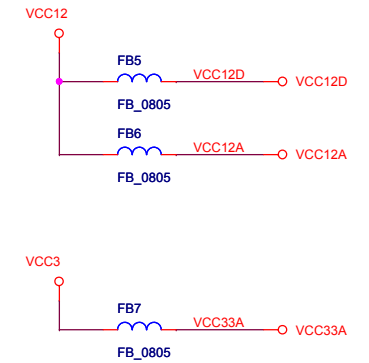
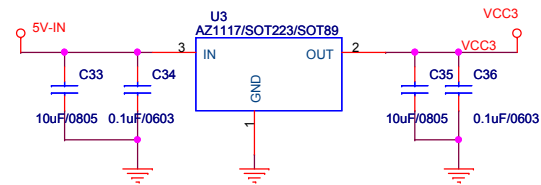
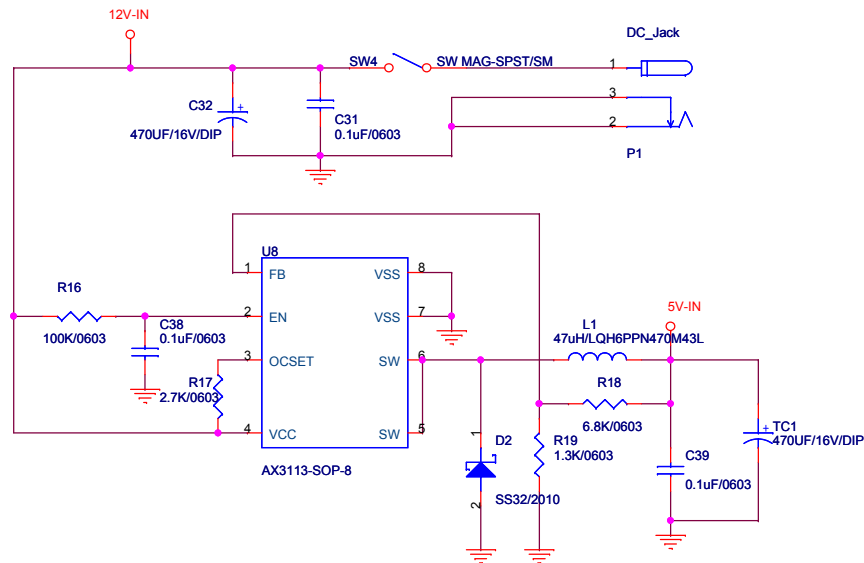
Firmware can be upgraded through external Serial Flash

Option



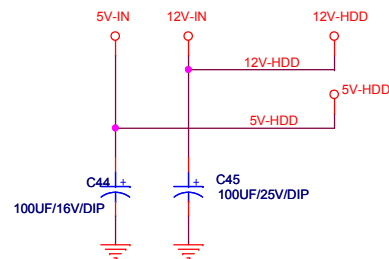
Place Near Chip

PROLIFIC		
Title PL2771 LQFP64 Demo Board		
Size B	Document Number PL-2771+Controller USB/ SATA	Rev 1.2
Date: Tuesday, November 23, 2010	Sheet 2	of 3

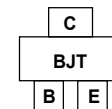
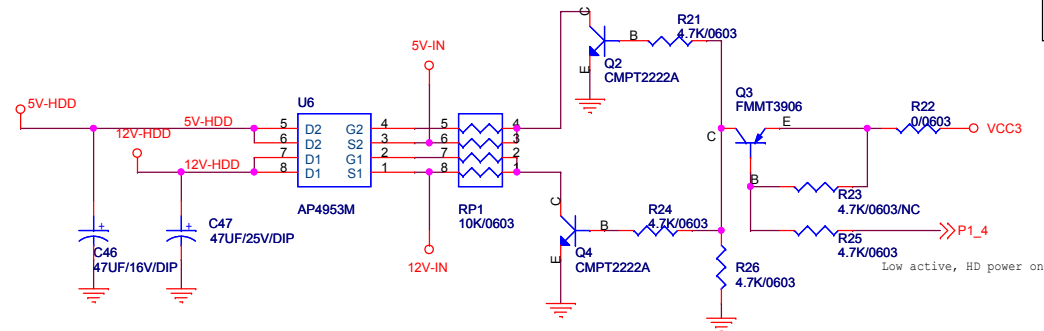


Power supply to Device(HDD, CD and DVD.. etc) has two ways;
please select one from the following power functions.

Power supply 1 : direct



Power supply 2 : indirect and use P1_4 to control Device power



PROLIFIC			
Title			
PL2771 LQFP64 Demo Board			
Size	Document Number		Rev
B	Power-related circuit		1.2
Date:	Tuesday, November 23, 2010	Sheet	3 of 3