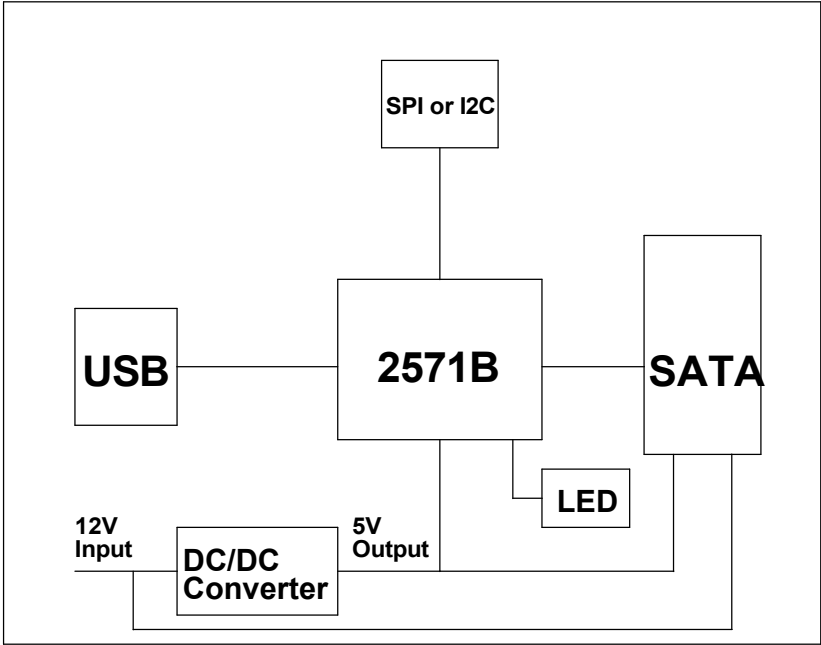

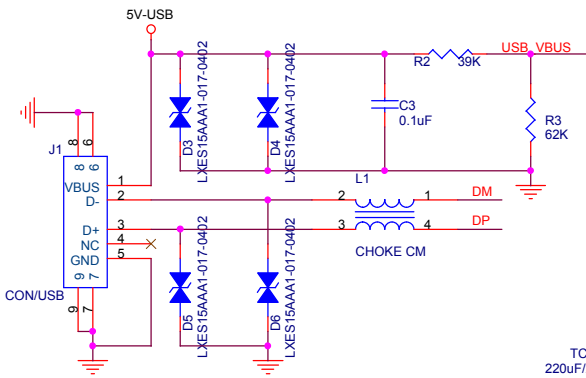


Version	Date	Description	Author
V1.0	2009/06/12	First Released	H.P.-Shen
V1.1	2010/03/18	Change the value of these parts. (C14、C15、C16、C17、D3、D4、D5、D6、R19、R20、R24、R26)	H.P.-Shen

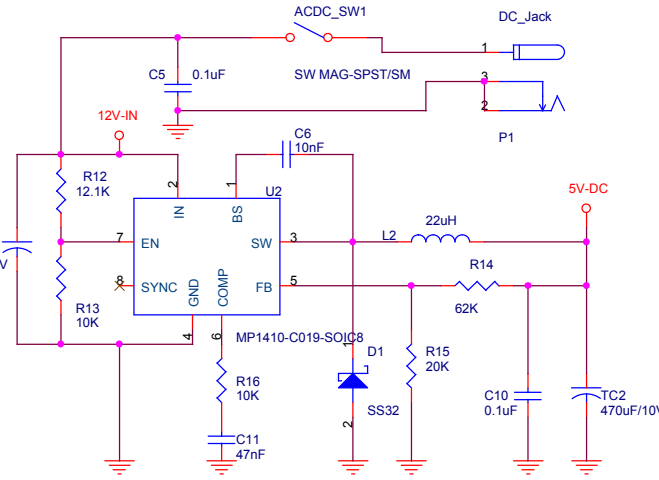


Page 1: Revision History & Block Diagram
Page 2: PL2571B, USB and SATA

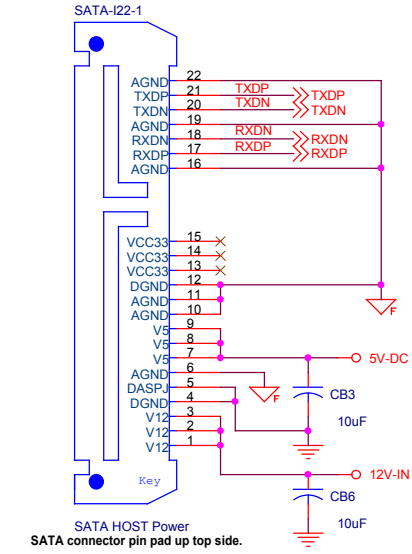
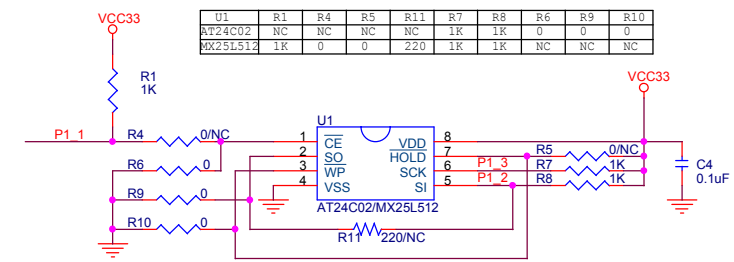
	Title		
	PL2571B-48 S-P Half-HDD-990318		
	Drawing Name		Size
	H.P.-Shen		B
Version	Date	Sheet	
1.1	18/03/2010	1 of 2	



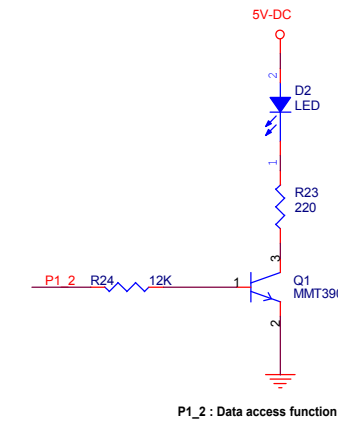
For 3.5" enclosure, use AC adaptor with minimum 2.5A output.



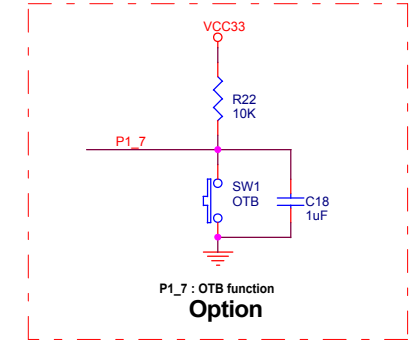
Please refer to the Layout Guide for detail.



SATA HOST Power
SATA connector pin pad up top side.



P1_2 : Data access function



P1_7 : OTB function
Option

No EEPROM	
P1_6	SATA Hot_plug. Enable low, Disable high.

Note1
C14,C15,C16,C17 Close to SATA connector.

C14	10nF	TXDP
C15	10nF	TXDN
C16	10nF	RXDN
C17	10nF	RXDP

*TXDP/TXDN and RXDN/RXDP impedance:
-Differential traces(100 ohm +/- 15 ohm)
-Single traces (50 ohm +/- 5 ohm)



Title		PL2571B-48 S-P Half-HDD-990318	
Drawing Name		H.P.-Shen	
Version	1.1	Date	18/03/2010
Sheet	2	of	2