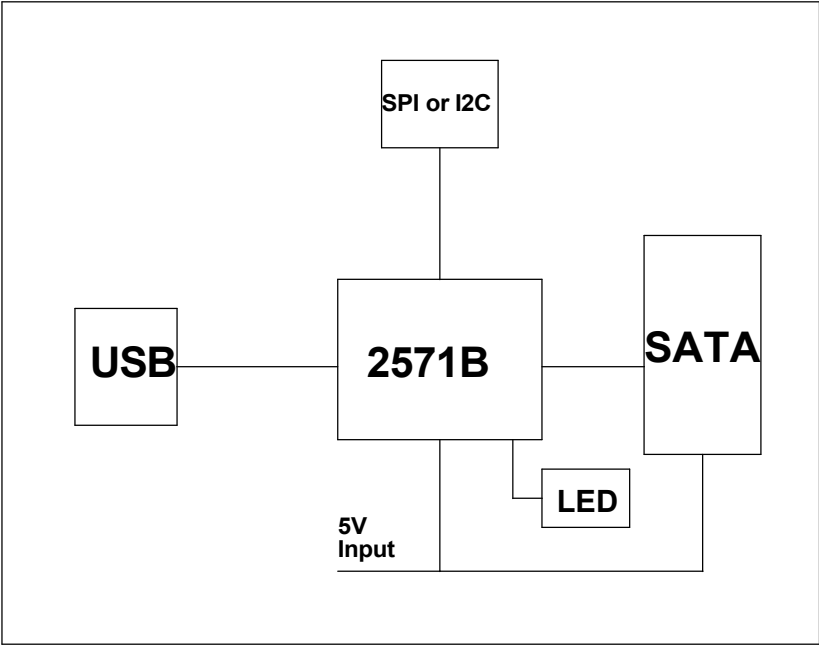



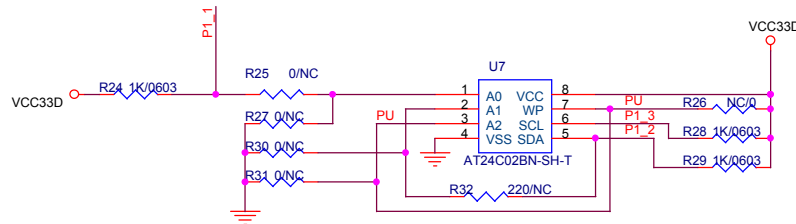
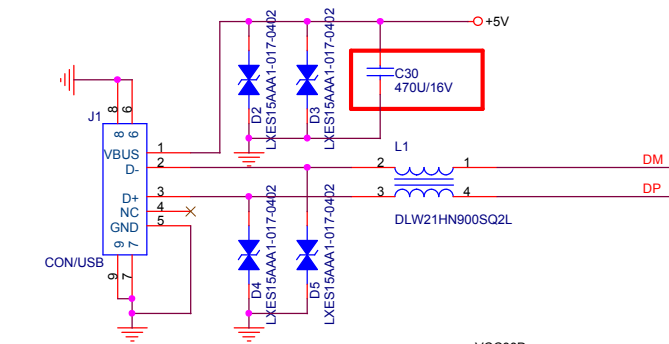
Version	Date	Description	Author
V1.0	2009/05/15	First Released	H.P.-Shen
V1.1	2009/06/01	VCC33==>VCC33D	H.P.-Shen
V1.2	2010/03/18	1. add a application note on C30 2. change the value of these parts (C18 、 C19 、 C21 、 C22 、 D2 、 D3 、 D4 、 D5 、 R41)	H.P.-Shen



Page 1: Revision History & Block Diagram
Page 2: PL2571B, USB and SATA

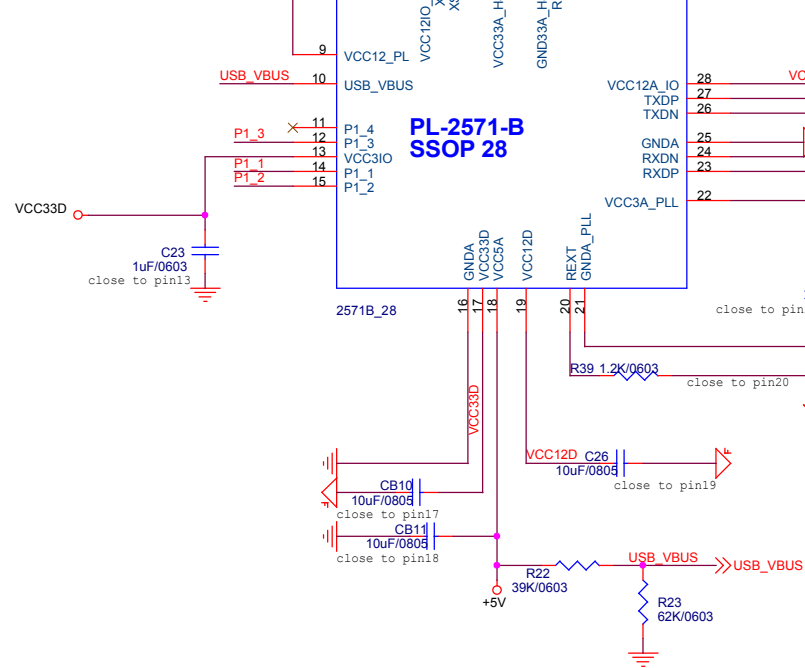
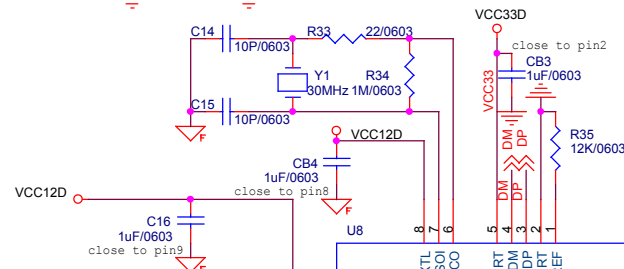
	Title		
	SCH-PL2571B-28 B-P Slim-990318		
	Drawing Name		Size
	HP-SHEN		B
Version	1.2	Date	18/03/2010
Sheet		1	of 2

If the total current of Vbus is over 1.5A,
the value of C30 must be over 220uF



U7	R26	R25	R32	R24	R28	R29	R27	R30	R31
PM25LV12	0R	0R	220R	1K	1K	1K	NC	NC	NC
AT24C02	NC	NC	NC	NC	1K	1K	0R	0R	0R

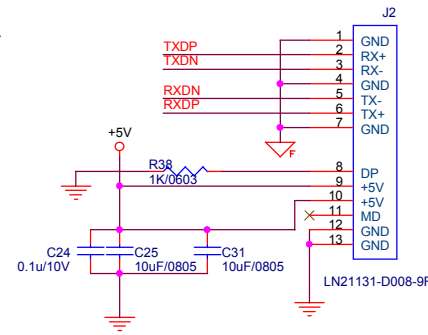
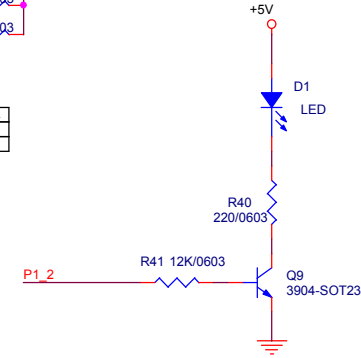
Please refer to the Layout Guide for detail.



Note1
C18, C19, C21, C22 Close to SATA connector.

Note 1
C18 10n/0603 TXDP
C19 10n/0603 TXDN

*TXDP/TXDN and RXDN/RXDP impedance:
-Differential traces (100 ohm +/- 15 ohm)
-Single traces (50 ohm +/- 5 ohm)



Title SCH-PL2571B-28 B-P Slim-990318			
Drawing Name HP-SHEN			Size B
Version 1.2	Date 18/03/2010	Sheet 2 of 2	