



# Prolific USB to SATA Bridge Controller USBFast Utility Software User's Manual

For Windows 2000/XP/Vista/7

Release Version 1.1 (10/1/2010)

## Contents

About USBFast Software  
System Requirements  
Using the USBFast Software  
    Installing USBFast  
    Running USBFast  
    USB 2.0 Benchmark Comparison  
    USB 3.0 Benchmark Comparison  
    Uninstalling USBFast  
Disclaimer

## Overview

This chapter provides an overview of the USBFast software for Prolific USB-to-SATA bridge devices.

## About USBFast Software

The USBFast software is a USB speed booster utility program that improves disk data transfer performance.

- ✓ Improves performance for both USB 2.0 and USB 3.0 interface (does not improve speed for USB 1.1 interface and is not recommended).
- ✓ Supports both External Hard Drive and Optical Drive (using Prolific chip)
- ✓ Detects multiple devices
- ✓ Easy to install and operate

## System Requirements

Hardware & Software Requirements:

- ✓ Pentium based and higher or compatible computers with USB port
- ✓ External USB Hard Drive or Optical Drive (using Prolific chip)
- ✓ Microsoft Windows 7, Vista, XP, 2000 SP4 (32-bit & 64-bit)
- ✓ Prolific USBFast Utility Software

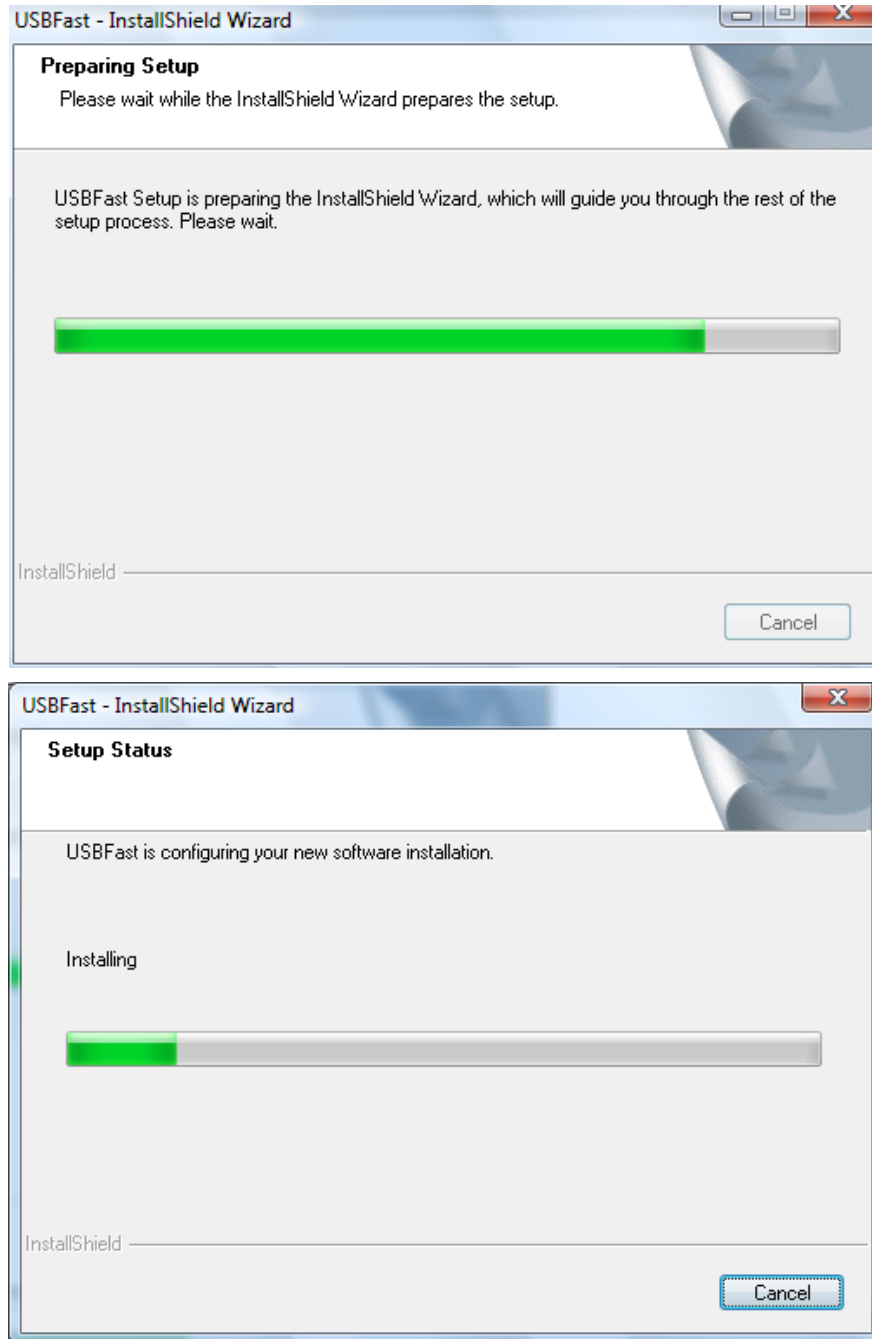
## Using the USBFast Software

This section provides guidelines on how to install and use the USBFast software.

### Installing USBFast

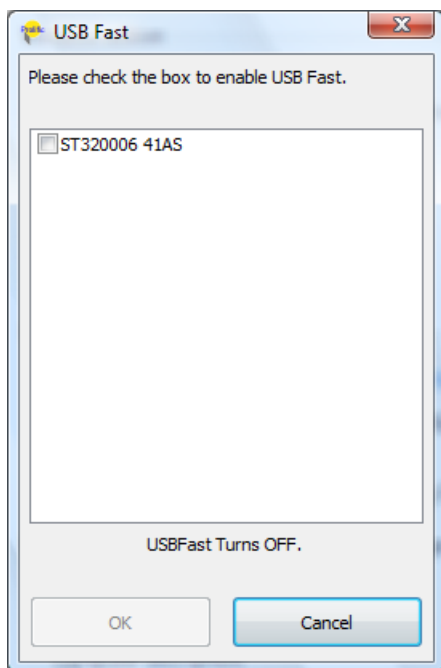
To install USBFast, you simply run or double-click the USBFast installer program in Windows.

**Note:** You must first plug in the Prolific USB drive before installing the USBFast program or uninstalling the USBFast program.

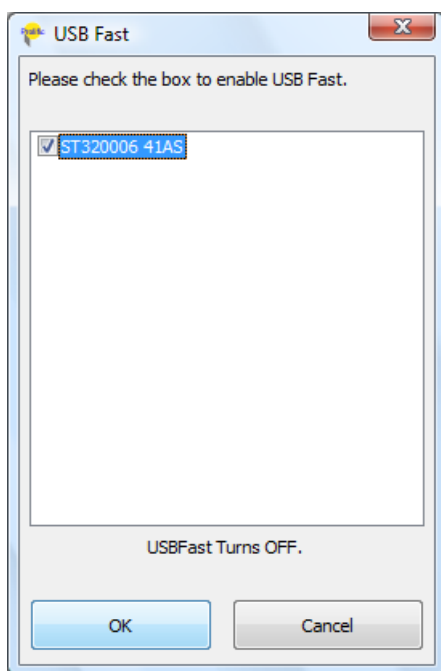


## Running USBFast

1. Plug in your USB disk drive to the USB port if you still haven't done it yet. Go to Start-Programs-USBFast folder. Click USBFast to run the software.
2. The USBFast program window will show you the status of your USB disk drive if USBFast feature is enabled or not.



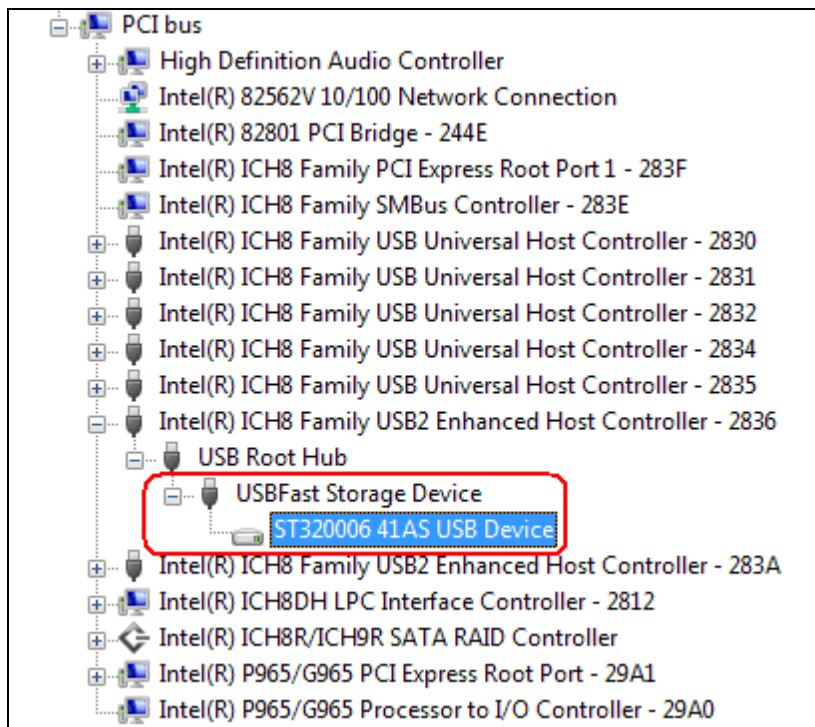
3. To enable USBFast on the detected disk drive, click enable on the check box and click the OK button to activate. If USBFast is already ON, skip this step.



4. USBFast will prompt you to replug the device once driver is update. To turn off USBFast again, just uncheck the disk drive box and click OK and replug.



5. After plugging the device back, you can also click Start-Settings-Control Panel-Systems-Device Manager (View by Connection) and see if "USBFast Storage Device" is detected.

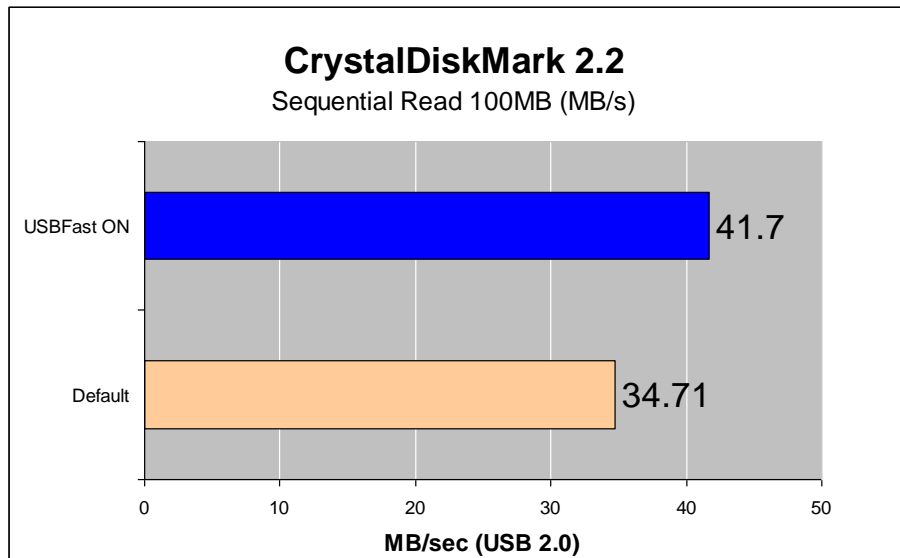


6. To turn off USBFast, just uncheck the disk drive box and click OK and replug.

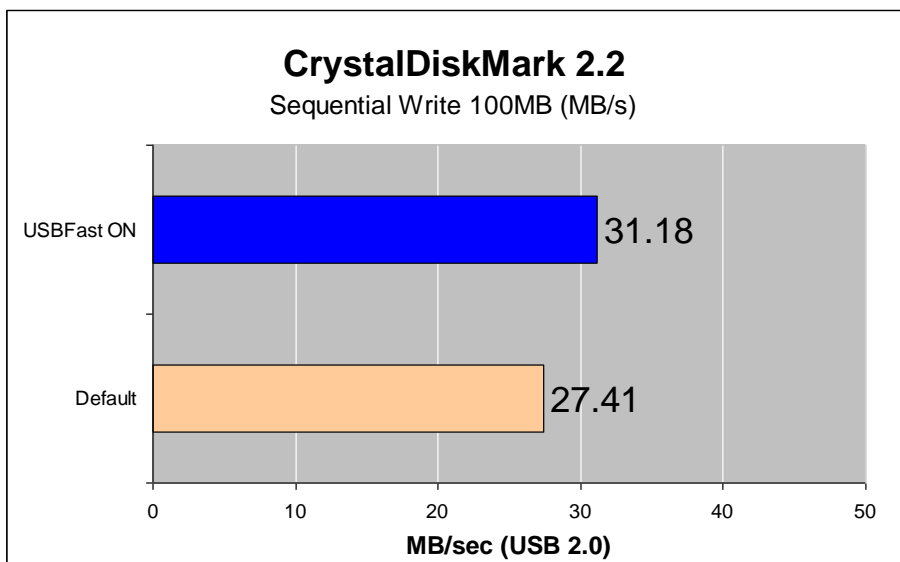
## Hi-Speed USB 2.0 Benchmark Comparison

This section shows the benchmark comparison under the same test environment for USBFast enabled and default driver when Prolific device is attached to USB 2.0 port.

Test Configuration (Windows 7 RTM x64)	
System / Motherboard	DELL Dimension E520 Desktop (Intel ICH8 EHCI)
CPU / RAM	Intel Core2 Duo E6300 @1.86G / 1GB RAM
USB SATA Bridge Board	Prolific PL2771 USB 3.0 to SATA Bridge Controller + Seagate Barracuda XT 2TB (SATA 6G)
Benchmark Test Software	CrystalDiskMark v2.2



Sequential Read Test shows at least a 20% speed improvement using USBFast.



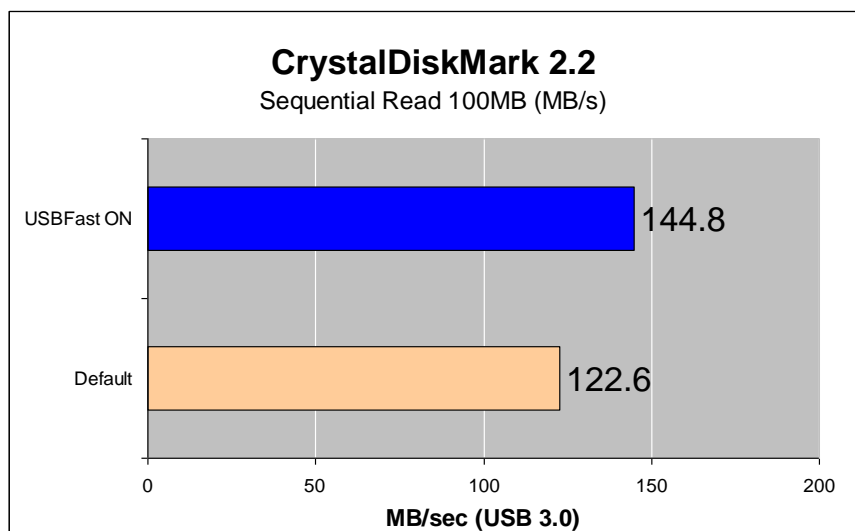
Sequential Write Test shows at least a 13% speed improvement using USBFast.

NOTE: Speed improvement varies depending on disk drive and PC configuration.

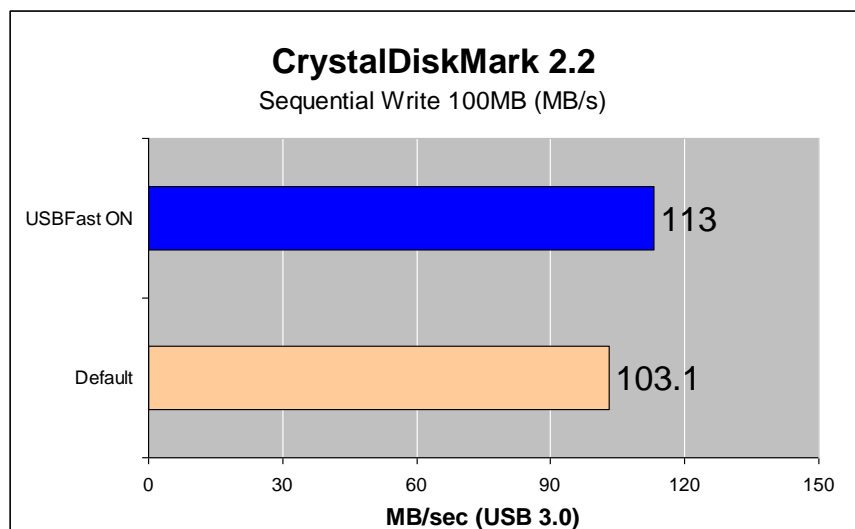
## SuperSpeed USB 3.0 Benchmark Comparison

This section shows the benchmark comparison under the same test environment for USBFast enabled and default driver when Prolific device is attached to USB 3.0 port.

Test Configuration (Windows 7 RTM x64)	
System / Motherboard	DELL Dimension E520 Desktop (Intel ICH8 EHCI)
CPU / RAM	Intel Core2 Duo E6300 @1.86G / 1GB RAM
USB 3.0 PCIe Host Chip	NEC $\mu$ PD720200 0934KU901 (PCIex1 GEN1)
USB 3.0 Host Driver	NEC/Renesas Driver v2.0.4.0
USB SATA Bridge Board	Prolific PL2771 USB 3.0 to SATA Bridge Controller + Seagate Barracuda XT 2TB (SATA 6G)
Benchmark Test Software	CrystalDiskMark v2.2



Sequential Read Test shows at least an 18% speed improvement using USBFast.



Sequential Write Test shows at around 10% speed improvement using USBFast.

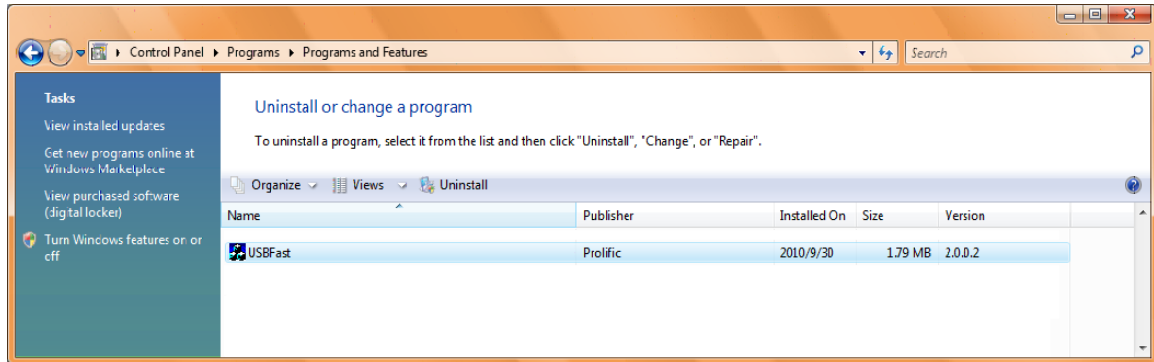
NOTE: Speed improvement varies depending on disk drive and PC configuration. GEN2 host may not have big speed improvement on some hard drives since highest disk performance may already be achieved.

## Uninstalling USBFast

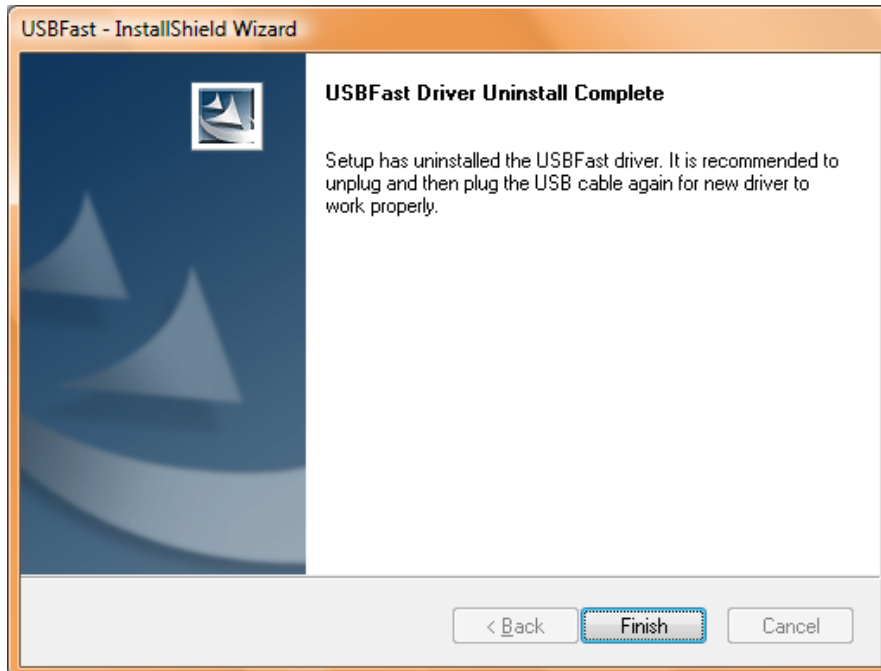
To uninstall USBFast, follow the steps below:

**NOTE: Make sure the Prolific USB drive is plug to the USB port before you uninstall the USBFast program. This is a requirement to uninstall USBFast driver properly.**

1. Go to Control Panel – Add/Remove Programs or “Programs and Features” to uninstall USBFast. Click Uninstall or Remove to continue.



2. The USBFast InstallShield Wizard will start the uninstall process. Wait until the Setup Wizard completes the driver uninstall. Click Finish when complete.



## Disclaimer

Information in this document is subject to change without notice. The manufacturer does not make any representations or warranties (implied or otherwise) regarding the accuracy and completeness of this document and shall in no event be liable for any loss of profit or any other commercial damage, including but not limited to special, incidental, consequential, or other damages.

No part of this document may be reproduced or transmitted in any form by any means without the express written permission of the manufacturer.

All brand names and product names used in this document are trademarks or registered trademarks of their respective holders.

## Prolific Technology Inc.

7F, No. 48, Sec. 3, Nan Kang Rd.  
Nan Kang, Taipei 115, Taiwan, R.O.C.  
Tel: 886-2-2654-6363  
Fax: 886-2-2654-6161  
Email: [sales@prolific.com.tw](mailto:sales@prolific.com.tw)  
URL: <http://www.prolific.com.tw>